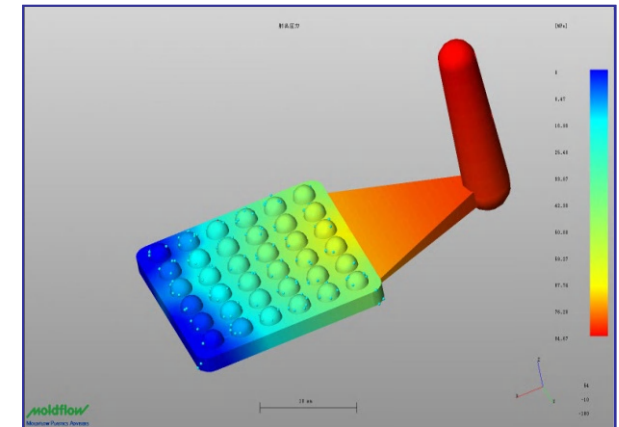
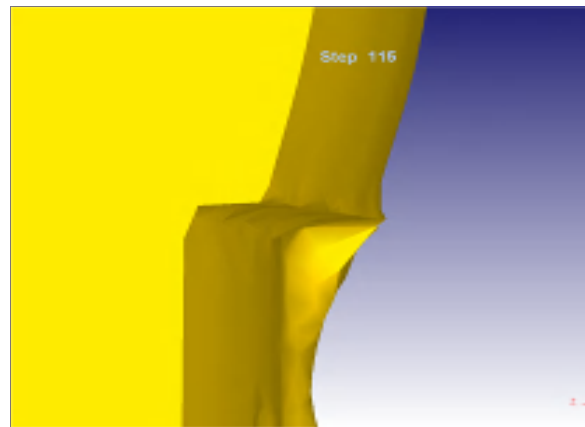
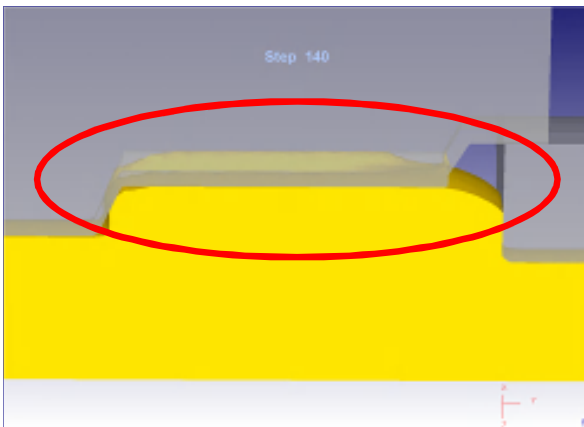
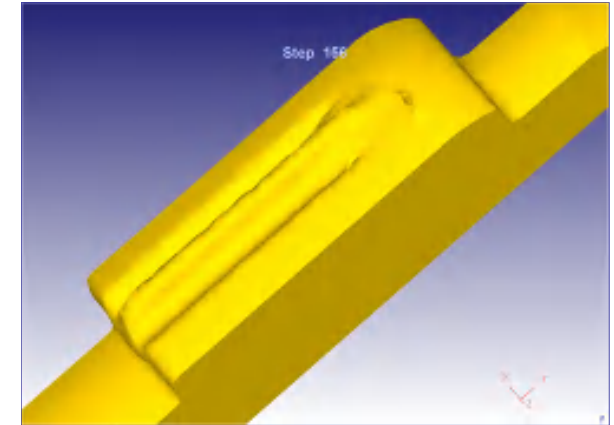


Optimum Use Of Simulation (Deform & Moldflow) Ensures



- ◆ Reduced design cost and production lead time of molds
- ◆ Mitigation of startup risks by troubleshooting before mass production
- ◆ Quality by optimal design
- ◆ Verification of machining conditions in order to maintain product quality



Verification of filling status of mold–filling material

Verification of flash formation

Verification of air bubbles formed during injection molding